

# Cyclops 6

Stand-alone reader for Immuno-hematology applications in GEL CARDS



## Main features

High resolution Gel Card image capturing and storage in archive repository

Automatic result interpretation for standard and proprietary reactions type

Safe processing using on-board barcode reader

Local worklist implementation and processing

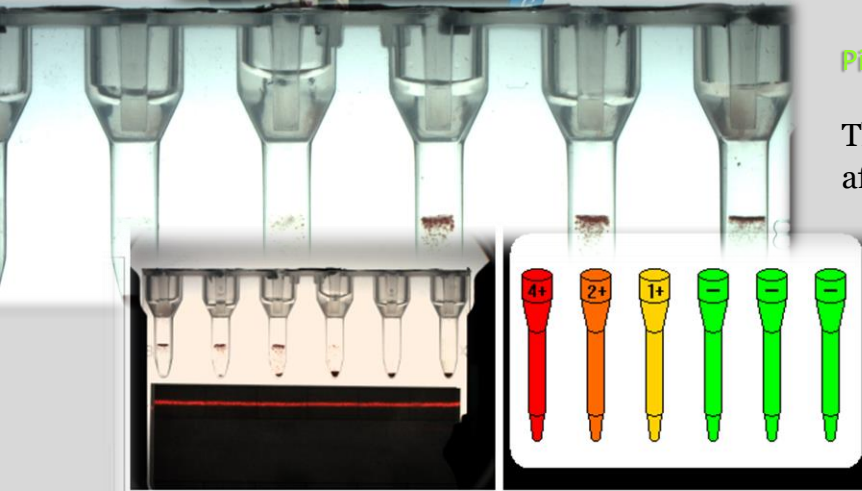
Communication with external instrument or host-PC

Suitable for ABO/Rh Grouping, Antibody screening, Phenotyping and Cross-match testing



### High resolution

A sophisticated “telecentric” optical lens connected to a high resolution CCD camera (5Mpixels) allows the capturing of the Gel Card picture in single file, in compressed format.



### Pictures repository

The reactions are automatically evaluated after the picture capturing and stored with the results interpretation in the Archive repository.

### Flexible Interpretation

The result interpretation is based on a flexible algorithm whose parameters can be adapted to different type of agglutination reaction.

Dedicated interpretation settings can be assigned specifically to each Gel Card type, depending on the sensitivity of the reagents and related reaction scores.

EDIT Validation Export

Samples Reagents

GelCard_005	5011010021103000200	1	5107426801	C neg c pos E neg e neg K neg
GelCard_006	5011010021103000195	2	5107430401	C neg c neg E neg e neg K neg
GelCard_007	5011010021103000199	3	5107428401	C neg c neg E neg e neg K neg
GelCard_008	5011010021103000198	4	5107428501	C neg c neg E neg e neg K neg
GelCard_009	5011010021103000203	5	5107428601	C pos c pos E pos e pos K pos

Test Area

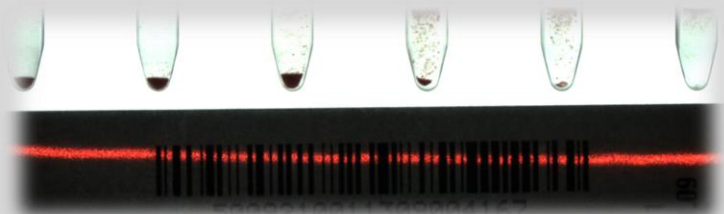
3+ 3+ 3+ - - - Calculate

weight settings of Scores

Min Valid Value 20.00 Uncertain Result % 0.10

4+ 0.75 3+ 1.00 2+ 2.00 1+ 1.30 - 1.00

### Safety



The on-board barcode scanner allows a safe testing, alerting the user when incorrect or expired Gel Card

mismatch the worklist in process.

### Local worklist or automated processing

The enhanced user interface allows to implement local worklist for manual processing or working through the connection with external sampler or automatic pipettors (different drivers available or customizable).

BarCode	Name	1_Method	2_Method	3_Method	3_Method_DAT	4_Method	5_Method
60138978	patient name 1	Booked		Booked			Booked
60138979	patient name 2	Booked		Booked			
60138980	patient name 3						Booked
00110152	patient name 4	Booked		Booked			
00110153	patient name 5						Booked
00001101	patient name 6						
00001102	patient name 7						

### Protected data

The access to the application interface (login) is protected by user ID and PW. Different user and privilege can be defined by the GSG LogInManager program.

### Validation and reporting

The result elaboration can be confirmed or modified by a validation process before to generate the reporting or send the result to an external host-PC.

The result print out is available in different format customizable by Crystal Report software. Reporting can be also saved as a file in the most common file format (PDF, XLS, DOC etc.).

The result elaboration can be confirmed or

Sample ID	Sample Result	Exp. Date	Lot Number
1 - IDX001	A D1+ D2 +	2012-11-04	70611
5 - IDX005	O D1+ D2 +	2012-11-04	70611
7 - IDX007	A D1+ D2 +	2012-11-04	70611

## Technical specifications

Resolution and Optics	5 M pixel CCD camera connected to a “telecentric” optic
Connection to PC	Via 2 USB plugs (CCD camera and BC scanner)
Weight and dimension (mm)	7kg – 250 (width)/410 (Depth)/210 (height)
Power	Voltage: 110 / 220 / 240 Volts AC Frequency: 50 / 60 Hz
Computer requirements	Dual core i5/i7 or higher – 2 USB port min Windows XP or Windows 7 operating system

a new experience in lab automation



GSG Robotix Srl  
Via G. Matteotti, 66  
Cinisello Balsamo (MI)  
20092 – Italy  
Tel. 0039 02 6128842  
Fax 0039 02 6178583  
[www.gsgrobotix.com](http://www.gsgrobotix.com)